



# INSTRUCTIONS FOR USE

The Hair Fader provides mechanical properties which create a fade (a.k.a. taper or blend) haircut by blending a small distance between two consistent hair lengths, usually a shorter hair length and a longer hair length, across the entire scalp.



**Note:** Because the Hair Fader provides only the fading effect, you will need two hair clipper guards that are the size of the shortest and longest hair lengths. The Hair Fader is not designed to cut at consistent hair lengths.

For example purposes only, in this guide, we refer to a fade haircut with the shortest consistent hair length at 1/8 inch (#1 clipper guard), the longest consistent hair length at 5/8 inch (#5 hair clipper guard), and a fade-effect length of 2 inches (distance between the shortest and longest hair length). Therefore, you will need a #1 guard and a #5 guard.



### Step 1:

Using a #1 guard, start at the bottom of the scalp and cut upwards to the specific point you want the fade to begin. Do this along the entire scalp (see image).

CUT 1



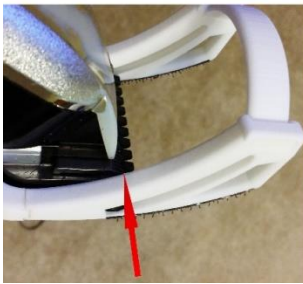
### Step 2:

Attach the Hair Fader to Wahl clippers. As you can see in the image, there is now a definitive line between the shortest hair length and the remaining hair. At this line, place the starting point (see image) of the Hair Fader against the scalp and cut upwards. **DO NOT lift the clippers when fading.** Although this is true when cutting using clippers, it is not the case with the Hair Fader.

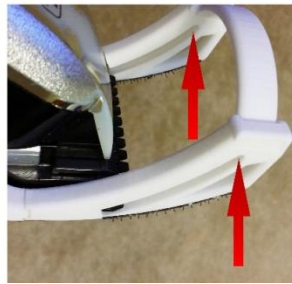
CUT 2



Starting Point



Ending Point



### Step 3:

It is important to keep enough pressure on the scalp to prevent slippage and inconsistent fade lengths. When you come to the ending point, where the Hair Fader will not travel within its arched guides, then you can lift it up and away from the scalp. **DO NOT lift the Hair Fader until you have reached this ending point.**

CUT 3



### Step 4:

Proceed to the next cut at the definitive line until the line has essentially disappeared and your fade is complete.

Cut Remaining Fades



Congratulations, you have your fade! Now that you're looking good, you can stop here or clean up the top portion of your hair (the longest hair length) by cutting it at a consistent length using your #5 hair clipper guard.

**Note:** The Hair Fader is available in one size and is only compatible with Wahl Clippers.